

# Kat's Great Adventures

**Austria – Germany - Hungary – Slovakia Danube Waltz Bike and Boat Tour 2022**  
**Passau – Vienna – Bratislava – Budapest**  
**Self-Guided or Guided Tour**  
**8 Days / 7 Nights**



By bike and boat from the “Bavarian Venice” directly into the heart of the famous and glamorous former K+K monarchy Austria/Hungary. You can look forward to three of Europe’s most charming capitals: Vienna, the metropolis of Waltz, Bratislava, the capital of coronation and Budapest, the “Paris of the East”. The bike tours lead you to the romantic “Great Loop” (Schlögenger Donauschlinge), the picturesque Danube Bend with Hungary’s greatest cathedral and the legendary Wachau valley, which is part of the UNESCO World Heritage with the small villages and beautiful palaces and castles.

On board our comfortable cruise ship you enjoy an exclusive atmosphere – in the spacious, convenient cabins as well as in the stylish outdoor area. Experience the fantastic view to breathtaking landscapes – on the bike, from the pool on the sun deck, in the comfy seats of the lounge, and even during your amazing meals in the first class restaurant. This exciting bike trip will make your holiday unforgettable.

## Itinerary Day to Day

### **Day 1: Passau/surroundings**

Boarding time at 4:30 p.m. Located at the meeting point of the Danube, Inn and Ilz Rivers, Passau has numerous of interesting sites to visit. Use your free time and stroll through the cobblestoned old town center, listen to the bells of Passau's Gothic Town Hall or have a look at the world's largest Catholic Church organ in the Passau Cathedral. At 6:00 p.m. we cast off!



### **Day 2: Great Loop - Engelhartzell – Aschach 42 km**

Your first day's cycling begins with a ride through the classic scenery of the 'Great Loop' Donauschlinge - one of the most beautiful sections of the Danube. Along the way you will encounter tiny villages and cozy cider taverns. In Austria's only Trappist monastery at Engelhartzell you can taste their delicious liquors and cheese. The famous 'Schlogener View' provides a wonderful panorama of the surrounding Austrian countryside. The boat welcomes all cyclists back on board in the charming market town of Aschach.

### **Day 3: Devin – Bratislava 43 km**

You pedal along the former 'Iron Curtain', cross the green line and reach the imposing Imperial Palace of Hof with its beautifully terraced gardens. Follow the bike path through Austria's 'vegetable garden' to the coronation city of Bratislava and the slopes of the Little Carpathians and discover the hidden alleyways and sights of Bratislava on an optional city tour.

### **Day 4: Budapest – Excursion to Szentendre 54 km (or day of rest)**

The entrance to Budapest, Hungary's capital is stunning. Savour the beauty of Budapest during a coach tour or a guided bike tour (optional) to discover many of the highlights of this handsome city. You can also choose to cycle to the charming town of Szentendre with its Mediterranean atmosphere and lively art scene. You will get a very close experience of Hungarian culture at an evening show with traditional music, local appetizers and dance (optional).



## Day 5: Danube bend – Esztergom 43 km

Situated in the middle of the Danube River the idyllic isle of Szentendre exudes silent Puszta romance. History, folklore and Hungarian way of life will accompany you on your way to Esztergom where the gorgeous basilica – Hungary's largest Catholic Church is impressing its guests.

## Day 6: Vienna (day of rest)

Discover Vienna's most beautiful attractions. During a city tour by bike or bus (optional) you will experience Vienna's most famous examples of architecture: the imperial Hofburg, St. Stephens Cathedral, the gorgeous 'Ring' boulevard and the State Opera House, the Burgtheater and town hall and, of course, the colorful "Hundertwasserhaus". Take time to relax in one or more of Vienna's famous cafés, while the evening ends impressively at a classical concert (optional) at a famous Viennese Palace.



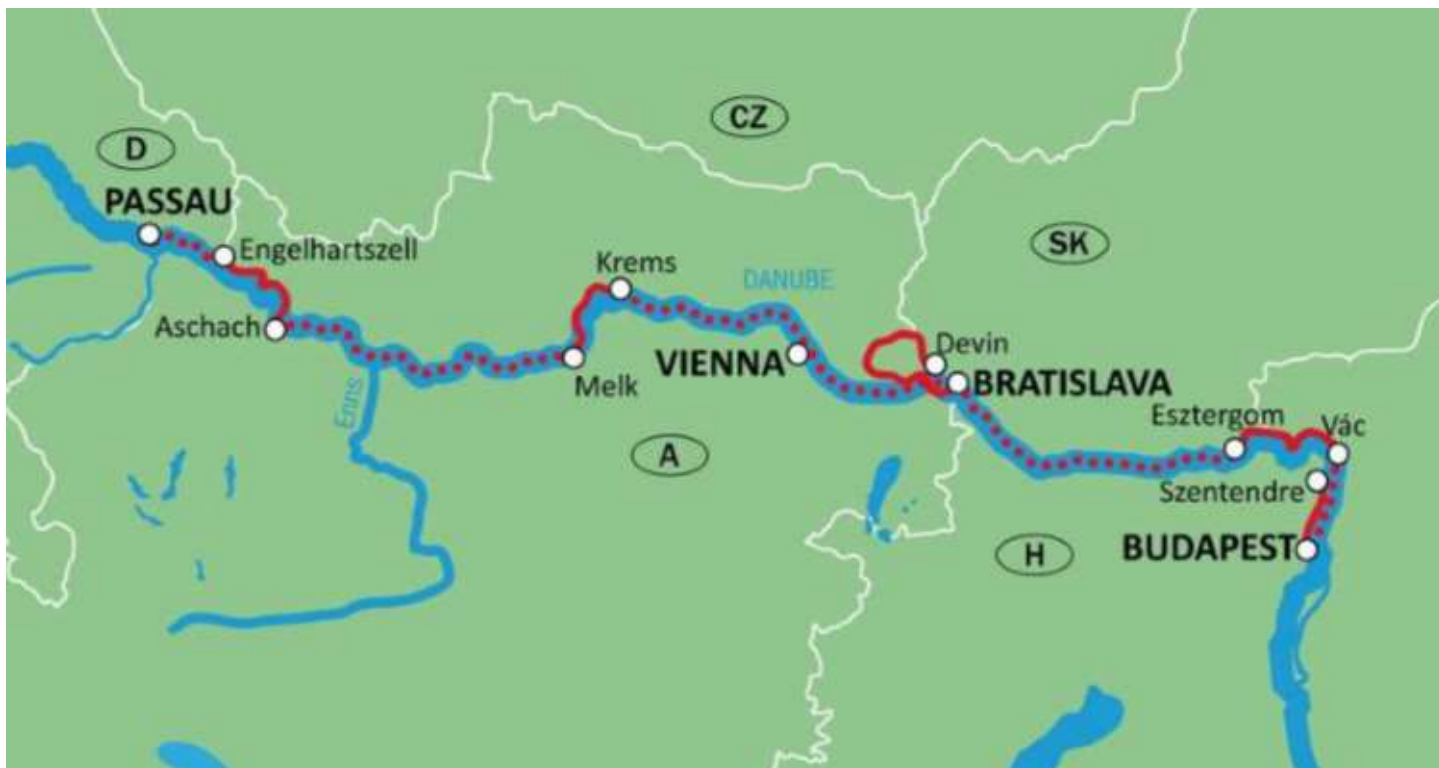
## Day 7: Wachau / Krems – Melk 37 km

Your last biking day is a special highlight! A powerful ruin looms above the small Baroque town of Durnstein, while the blue spire of the monastery church is a landmark of the renowned Wachau. Amidst dreamy towns, apricot trees, vineyards and castles, this hilly landscape enchants everybody who visits ... you will be biking on cloud nine! In Weißenkirchen (possibility to do a wine-tasting – optional) you will find comfortable wine taverns along the bike path.

## Day 8: Passau

As you cruise back up the Danube enjoy the early morning sunshine as you wind your way to Passau, where you'll disembark at approx. 10:00 a.m. Connecting travel should be booked for 11:30 a.m. onwards.

## Route



### Technical Characteristics:

**Tour Profile:** Easy. The Danube cycle path leads through terrain with only slight gradients. Do not feel like cycling? Without effort you will also reach your destination by ship.

**Distance:** 219 km

**Travel Season:** Self-Guided Tour on MV Fortuna: Sunday departures April 24 – October 9, 2022  
Self-Guided Tour on MV Swiss Crown: Saturday departures May 28; July 2; September 3 and October 8, 2022  
Guided Tour on MV Fortuna: Sunday departures May 22; July 17; October 2 and October 9, 2022  
Guided Tour on MV Swiss Crown: Saturday departures May 28; July 2 and September 3, 2022

Season 1: April and October  
Season 2: May and August  
Season 3: June, July and September



**Prices per Person: MV Fortuna**

	Season 1	Season 2	Season 3
Standard Cabin	€ 799.00	€ 899.00	€ 949.00
Comfort Cabin	€ 899.00	€ 999.00	€ 1049.00
Superior Cabin	€ 999.00	€ 1099.00	€ 1149.00
Deluxe Cabin	€ 1199.00	€ 1299.00	€ 1349.00
Suite Cabin	€ 1479.00	€ 1579.00	€ 1629.00
2 bed single occupancy (Standard and Comfort Cabin)		+55%	
Supplement 3 Bed Cabin (Suite Upper Deck)		€ 889.00	
Guided Tour		€ 255.00	
Hybrid Bike Rental (21 speed)		€ 80.00	
E-Bike Rental		€ 180.00	
Extra Nights Passau 3* Double Occupancy B&B		€ 51.00	
Extra Nights Passau 3* Single Occupancy B&B		€ 79.00	
Extra Nights Passau 4* Double Occupancy B&B		€ 68.00	
Extra Nights Passau 4* Single Occupancy B&B		€ 96.00	

**Prices per Person: MV Swiss Crown**

	Season 1	Season 2	Season 3
Standard Cabin	€ 899.00	€ 949.00	€ 1049.00
Comfort Cabin	€ 1049.00	€ 1099.00	€ 1199.00
Superior Cabin	€ 1199.00	€ 1249.00	€ 1349.00
Mini Suite	€ 1199.00	€ 1249.00	€ 1349.00
Standard One Bed Cabin	€ 999.00	€ 1049.00	€ 1149.00
Guided Tour		€ 255.00	
Hybrid Bike Rental (21 speed)		€ 80.00	
E-Bike Rental		€ 180.00	
Extra Nights Passau 3* Double Occupancy B&B		€ 51.00	
Extra Nights Passau 3* Single Occupancy B&B		€ 79.00	
Extra Nights Passau 4* Double Occupancy B&B		€ 68.00	
Extra Nights Passau 4* Single Occupancy B&B		€ 96.00	

## Included:

### Self-Guided Tour

- 7 nights in outside cabins with private facilities and air conditioning
- Port charges
- Program according to itinerary from/to Passau
- Captain's greeting and welcome cocktail
- Daily cabin cleaning, towels and bed linen
- Full board: rich breakfast, lunch onboard (non-cyclists) or packed lunch (cyclists), afternoon coffee break, dinner (2/3 dishes to choose), late night snack
- Standard Drink Package (valid from 10.00 – 22.00 hrs) - MV Fortuna only
- Gala dinner with farewell cocktail
- Farewell crew show
- Daily live music
- Cruise director on board (does not cycle with the group)
- Daily information meeting
- Detailed road book per cabin

### Guided Tour *above plus the following*

- Cycling tour guide
- Tasting of homemade cider at a cider producer in the Upper Danube Valley
- Ferry rides
- Guided city tour by bike in Vienna & by HOP ON HOP OFF bus in Budapest
- Wine tasting with a local wine grower
- Bike helmet rental



## The cruise ship MV Swiss Crown

Stylish, elegant and timelessly beautiful - this is how the 4\* SUPERIOR ship MS Swiss Crown presents itself as it glides gently along the Danube river. You will immediately feel at home on board as soon as you enter the spectacular foyer. Designed in warm wood tones, the ship radiates a comfort and leaves nothing to be desired. The simple elegance of the timelessly beautiful staterooms, which are decorated with great attention to detail, will inspire you. Sit back, enjoy the serene, relaxed atmosphere, the fantastic views of breathtakingly beautiful natural landscapes, sometimes from the bicycle seat, sometimes from the inviting, partially covered sun deck. Let yourself



be pampered by the friendly, accommodating crew and create on board relationships alongside memories to last a lifetime.

### 3 passenger decks:

Upper deck + Middle deck (windows can be opened), Main deck (windows cannot be opened)

### Cabins:

The 68 outward facing cabins are spacious 14 m<sup>2</sup> (single cabin 12 m<sup>2</sup>) and convince with elegant, comfortable interior. The cabins have a double bed (can be separated to 2 single beds), shower/WC, hairdryer, SAT TV, safe, coffee maker and individually adjustable air conditioning.

Standard: Main deck, double bed to be separated, windows not to be opened

Comfort: Middle deck, double bed to be separated, windows to be opened

Superior: Upper deck, double bed to be separated, balcony, windows to be opened

Mini suite: Middle deck, double bed to be separated, windows to be opened, minibar



## The cruise ship MV Fortuna

Step on board into a stylish and luxurious atmosphere. From the bright and airy Panorama Salon, the comfortable Bar or the Sun Deck (in some areas roofed over) enjoy the picturesque riverside scenery as the ship glides through the water. In the elegant Panorama Restaurant our trained crew will pamper you with local and international specialities. As well as a generous foyer with reception and shop, the ship also has a cozy library, an Internet Corner and a lift between the middle and top decks as well as a stair lift to the sun deck. Wi-Fi is available on board (although signal strength can vary, to be paid for on the ship).



### 3 Passenger Decks:

Upper deck (windows to be opened), Middle deck (windows partially openable), Main deck (windows not to be opened)

### Cabins:

85 comfortable equipped outside cabins. The 2 bed cabins are approx. 14–15 m<sup>2</sup> (Suites 25-28 m<sup>2</sup>), the cabins are equipped with a private bathroom with a shower, hair dryer, TV, safe and full air-conditioning.

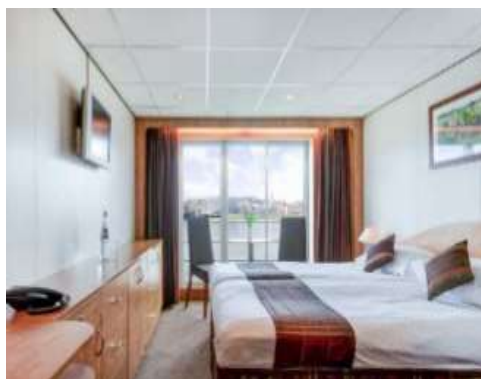
Standard: Main deck, 2 separated beds, windows not to be opened

Comfort: Middle deck (front area of the ship), double bed to be separated, 2x panorama windows not to be opened

Superior: Middle deck, double bed to be separated, 2x panorama windows to be opened

Deluxe: Upper deck, double bed to be separated, French balcony

Suite: Upper deck, double bed to be separated, French balcony, additional sofa



## Bikes



Our bicycles are modern and high standard quality of KTM. We offer 28 Zoll Unisex tour bikes with deep comfort entrance. The bikes are equipped with a precious Shimano 7 gear hub with back pedal and caliper breaks or 21 derailleur gear with override, caliper breaks and robust wheels. Our bicycles are mostly not older than 3 years.

Our bicycles are equipped with:

- 1 good sized, waterproofed pannier bag
- 1 handle bar bag
- repair kit
- air pump
- lock

## **Electric bikes | E-Bikes | Pedelects**

You will receive modern high quality E-Bikes of the brands Flyer/Kalkhoff and KTM with 8 gear hub, individual regulated use of support of pedal use, robust wheels and deep Unisex comfort entrance. The bikes have a strong Panasonic Pedelect mechanism and a strong lithium ion battery. The batteries lasts up to 70 kilometres, depending on sort of cycling, weight and routing. The more hills to go, the heavier the weight, the more accucapacity will be used. You can regulate range of the battery if you use less support at the beginning and raise it if needed. Batteries will be loaded with the battery recharger by night in your room.