

Kat's Great Adventures

Austria – Germany - Hungary – Slovakia Four Countries Highlights of the Danube Bicycle and Boat Tour 2022
Self-Guided Tour
8 Days / 7 Nights



Accompanied by a cruise ship you cycle along Europe's second largest river Danube from the charming Bavarian “three river city” of Passau straight into the heart of the once glorious Imperial and Royal Monarchy. Enjoy three of the most enchanting European capitals: the lively Vienna, the Slovak coronation city of Bratislava at the foot of the Carpathian Mountains and Budapest, the "Hungarian Danube Queen"! By bicycle you discover the stunning natural spectacle of the Schlögener Donauschlinge ("Great Loop"), the legendary Wachau with romantic towns and mighty castles amidst lovely vineyards, the untouched alluvial forests of the Danube National Park, as well as the picturesque Hungarian Danube bend where the important cupola of the basilica in Esztergom salutes from the distance. The highlights of the tour: Passau, the City of 3 Rivers, the Schloegen Danube Loop, the Hungarian Danube Bend, the World Heritage Site Wachau, the metropolises of Bratislava, Budapest and Vienna.

Itinerary Day to Day

Day 1: Passau – Engelhartszell

Arrival in the "Three River City". Passau attracts many with the world's greatest church organs at the Stephansdom and its charming Old Town. Embarkation will be around 4:00 p.m., departure around 7:00 p.m. Enjoy your first dinner on board and an evening sail to Engelhartszell.



Day 2: Engelhartszell – Great Loop – Untermuhl - Devin 46 km

The day starts in Engelhartszell (with the only Trappist monastery in Austria), where we head towards the "Great Loop" - one of the most beautiful and original sectors of the Danube. Your cycling tour will encounter small villages and cozy must see taverns. You'll board again in Untermuhl. Then, you "sail into the night" towards Devin.

Day 3: Devin - Bratislava 10 - 44 km

Arrival at Devin in the morning. Your cycle tour takes you to the imposing Imperial Palace of Hof. After crossing the green line, you cycle along the former "Iron Curtain" towards the coronation city of Bratislava at the foot of the Carpathian Mountains. **Tip:** discover the hidden alleys of Bratislava, places and all the sights of this ambitious

metropolis during a tour by mini train and by foot. At night sailing to Budapest.

Day 4: Budapest (day of rest) or roundtrip to Szentendre 48 km

In the early morning, you enjoy the panoramic view of the Danube's gorgeous landscape on the sundeck. The gateway to Budapest is overwhelming, as many of the famous tourist features are situated directly next to the river bank. In the afternoon you can explore the numerous attractions of the city. Nearby, you find the Margaretheninsel which is outstandingly qualified for a small bike tour or the charming town of Szentendre with Mediterranean atmosphere and lively art life. At night sailing to Visegrad.

Day 5: Danube Bend - Visegrad – Esztergom 25 - 60 km

The Danube bend is definitely one of most delightful and attractive parts and is called the Hungarian Wachau. Today's bike leg starts at Visegrad with its famous fortress and the ruins of the former palace. You can choose from two different routes: the longer one includes a side trip to the island of Szentendre and the baroque village of Vác, which has been influenced by the architects of the Austrian empress Maria Theresia. The other route leads you directly to the bishop-town of Esztergom, with its gorgeous basilica – Hungary's largest Catholic Church – overlooking the village. At night sailing to Vienna.



Day 6: Vienna - Nussdorf / (Korneuburg may also be possible) (day of rest)

You should be sure to see the most famous places of interest like the St. Stephens Cathedral, the Hofburg, the gorgeous boulevard "Ringstraße" with the Burgtheater, the State Opera House or the town hall takes you back to the past. At night sailing to Rossatz or Dürnstein (Wachau).



Day 7: Wachau – Melk – Pöchlarn 39 km

Your last biking day is a special highlight! Amidst small dreamy villages, apricot trees, vineyards, castles, monasteries and ruins, this gentle hilly landscape enchants everybody. A powerful ruin looms above the small Baroque town of Dürnstein, while the blue tower of the monastery church is a landmark of Wachau. In the small village of Pöchlarn you will board again. After the farewell gala dinner, you start "sailing" back to Passau.

Day 8: Passau

Every journey draws to an end. Once again you enjoy on deck the first sunbeams and the peaceful silence of the Danube Valley. Take a last sight at the Schlägener Schlinge ("Great Loop") before you arrive relaxed at Passau. Arrival at approximately at 11:00 a.m., disembarkation half an hour later. We recommend to arrange connecting trips from noon onwards.



Route



Technical Characteristics:

Tour Profile: Easy. The bike tours are individual, at your own pace, without a tour guide, but with daily briefings on board and detailed bicycle maps and directions. When a guest does not want to cycle one day, she/he can skip the bike tour and relax on board while cruising to the next harbour.

Distance: 159 - 229 km

Travel Season: Saturday departures Season A: April 16 and October 8, 2022

Season B: April 30 and September 24, 2022

Season C: May 14; May 28; June 11; June 25; July 9; July 23; August 6; August 20;
September 3 and September 10, 2022

Prices per Person:

	Season A		Season B		Season C	
	Main Deck	Upper Deck	Main Deck	Upper Deck	Main Deck	Upper Deck
Two Bed Cabin	€ 799.00	€ 999.00	€ 899.00	€ 1099.00	€ 999.00	€ 1199.00
Two Bed Cabin for Single Use	€ 1198.50	---	€ 1348.50	---	€ 1498.50	---
Two Bed Cabin Front/Astern*	€ 699.00	---	€ 799.00	---	€ 899.00	---
One Bed Cabin	€ 1099.00	€ 1349.00	€ 1199.00	€ 1449.00	€ 1299.00	€ 1549.00
Two Bed Cabin in Front/Astern* for Single Use	€ 1048.50	---	€ 1198.50	---	€ 1348.50	---
Three Bed Cabin	---	€ 799.00	---	€ 899.00	---	€ 999.00
Hybrid Bike Rental 7 speed unisex bicycle, with freewheel or back pedal brake	€ 75.00					
E-Bike Rental with freewheel or back pedal brake	€ 165.00					

*Cabins at rear of the ship; perceive engine and generator noise (when ship is in motion and in locks)

Included:

- 7 nights in outside cabins with private facilities in the booked category
- Programme according itinerary from/to Passau
- Captains greeting and Welcome drink
- Daily cabin cleaning
- Changing of towels and bed clothes as necessary
- Full meals: 7x breakfast, 6x lunch on board (non-cyclists) or packed lunch for cyclists, 6x afternoon coffee break, 6x 3 course dinner and 1x farewell dinner with farewell drink
- On board musician
- Daily informational meeting
- Information pack with route book (one per cabin)
- Tour guide on board (does not cycle with group)
- GPS tracks
- Passenger and port fees

Not Included:

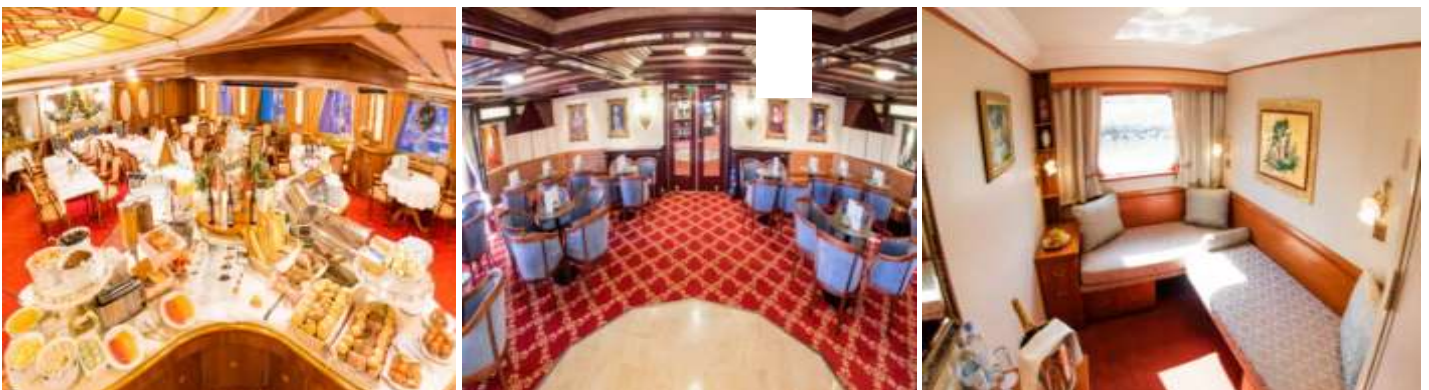
- Journey to and from Passau
- Shuttles
- Entrance fees and excursions
- Bike rental
- Ferry fees
- Drinks on board
- Tips

The Cruise Ship Prinzessin Katharina



The comfortable MS Prinzessin Katharina provides the right ambiance to make you feel at ease. On board the premium ship you can expect classic elegance, a tasteful interior and a friendly crew. Enjoy the special atmosphere and let yourself be spoiled by the good cuisine. On two passenger decks you will find a panoramic restaurant, a comfortable salon, two bars and an inviting foyer, a book corner, a small shop and a massage parlour. On the spacious, partly covered sun deck there are plenty of deck chairs.

All 71 cabins are outside cabins and comfortably and tastefully furnished featuring en suite facilities with shower/WC, hair dryer, air conditioning, TV, on board radio, telephone and a small refrigerator. The upper deck has 29 two bed cabins, one triple cabin and two single cabins; all cabins are approximately 11 square meters with a French balcony (floor to ceiling windows that can be opened). The two bed cabins have a sofa bed with a pullman bed (stowed during the day for more comfort). In the triple cabin a third bed is folded down from the wall (maximum weight 80 kg). The main deck has 38 two bed cabins and one single cabin, all around 11 square meters, with two sofa beds standing in a right angle and a picture window (does not open)



Bikes

Hybrid Bike



The bikes are fitted with comfortable Selle Royal saddles. They also come with coaster brakes or a freewheel hub – all hub gears come from Shimano – and you can pick whichever one you prefer.

We offer three frame sizes: 45cm, 50 cm and 55 cm

All bikes are additionally equipped with tire pumps, repair kits with tools and spare inner tubes. For extra storage room, most bikes are fitted with panniers and/or handlebar bags.

Electric Bike



All the Pedelecs are equipped with Bosch mid-drive motors that come with fully integrated 500 watt Bosch rechargeable batteries. The innovative way of construction allows the batteries to become almost invisible. That way, cyclists gain the advantage of a well-balanced bike that is easily operated. It is perfect support and a high level of comfort even on long tours.